

SSHE Series Heater

Quick Start Guide

Sunhouse

08/80291/0

ISSUE: 5 Series: D

**This guide is for quick reference only.
Please refer to the operating instructions for further information.**

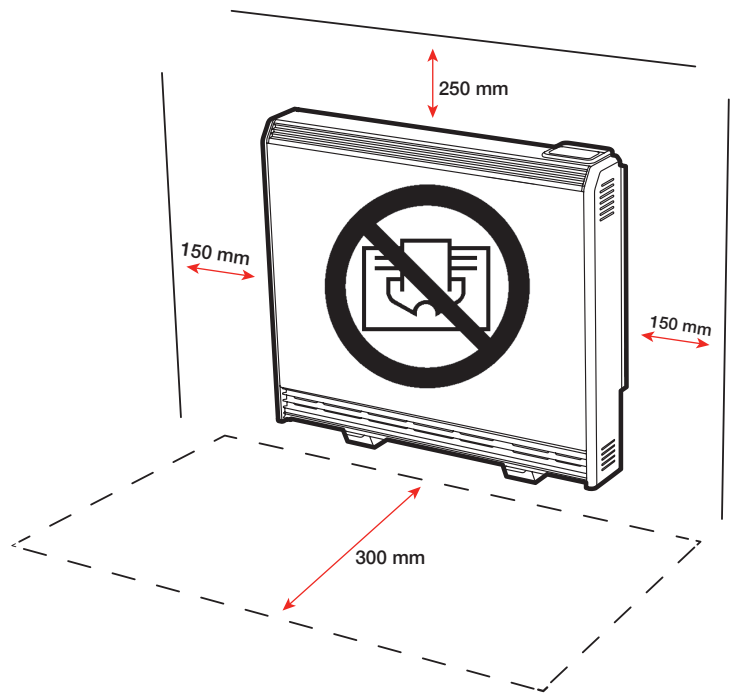
OVERHEATING WARNING

WARNING - In order to avoid overheating, do not cover or obstruct the heater.

Do not place material or garments on the heater, or obstruct the air circulation around the heater, for instance by curtains or furniture, as this could cause overheating and a fire risk.

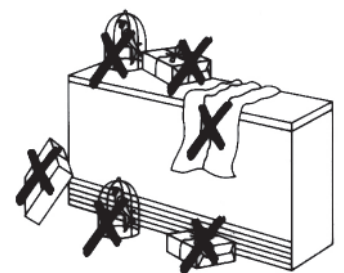
NEVER cover or obstruct in any way the heat outlet slots at the top of the heater or the air outlet slots in the base of the heater.

Do not place objects within 300mm of the front of the heater and 150mm either side.



- The outer case of the SSHE heater will be cooler to touch than a conventional storage heater. This is because less heat is 'lost' through the case, making more heat available from the fan outlet when needed.

- Nothing may be placed in the 300mm (1 foot) in front of the heater at any time. This is to avoid items coming into contact with the grilles and the heated air which leaves it. Blocking some or all of this area could represent a fire hazard.



- You do not need to decide how much heat to store. Simply set the timer mode and the temperature to what suits you and leave the heater to meet your requirements.

- Ensure that both supply switches next to the heater are turned on. During the summer when no heat is required, both wall switches can be turned off. Remember to turn both of these back on in Autumn when heat is required again.

How does the heater control work?

The heater control allows you to choose when you want the heating to be on, and at what temperature. To deliver the required heat a low noise fan pushes stored heat from the core into the room.

The periods during which the heater is providing heat are called '**Comfort On**' (shown at the bottom of the screen). Outside of these periods the heater will not deliver heat and these periods are called '**Comfort Off**'. During the '**Comfort On**' periods the fan will run to maintain the temperature on the screen. During the '**Comfort Off**' periods it will not.

Note: there is a delay of up to a minute on the fan operation when switching to 'Comfort On' or 'Comfort off'. This is normal and does not represent a fault.

Set the time

The time and date are set in the factory and should not need to be amended, however to check that they are correct press **Menu**, then press the **Enter** button with **Time / Date** highlighted. Use the **Up and Down** buttons until the correct value is shown, then press **Enter** button to confirm and move on to the next value. Repeat until all details are correct and the main menu screen is showing again, then press **Back**.

The time is automatically adjusted in Spring and Autumn at the changes between Greenwich Mean Time (GMT) and British Summer Time (BST), the heater must be switched on for this to happen.

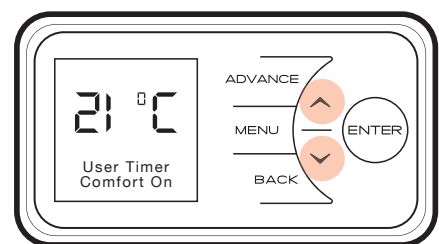
It is recommended to check the time every couple of months and adjust if necessary.

Set the temperature

The temperature shown on the display is the room temperature setpoint. This is the temperature that the heater will maintain during the '**Comfort On**' periods. If the room temperature is above this temperature then the fan will not operate.

The heater leaves the factory with this temperature set at 21°C which represents a typical, comfortable room temperature.

If you require a different room temperature use the **Up and Down** buttons until the display shows the temperature you require.



YOU DO NOT NEED TO TURN THE TEMPERATURE DOWN OVERNIGHT.

Set the timer mode

Your SSHE heater comes pre-programmed with a **User Timer** mode.

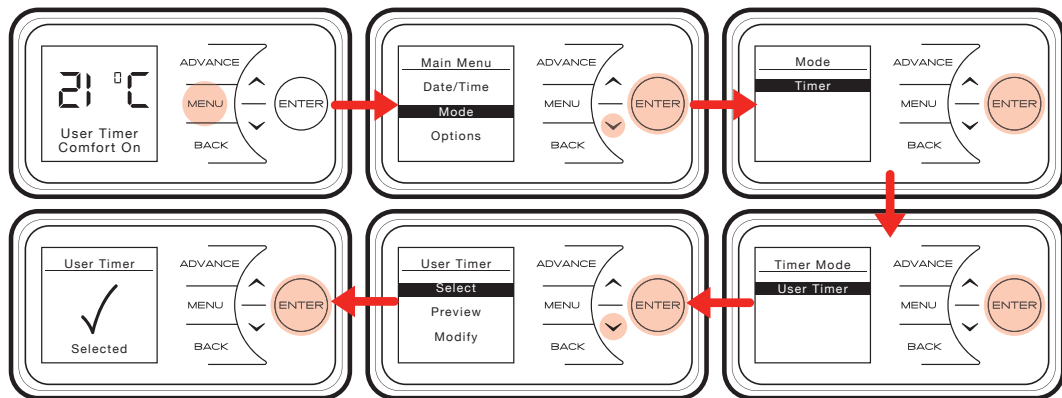
The three modes are:

Timer Mode	Description
User Timer (factory default)	11 hours heating per day in four periods

The mode defines the periods when the heater will operate in '**Comfort On**' mode.

Which timer mode is best for me?

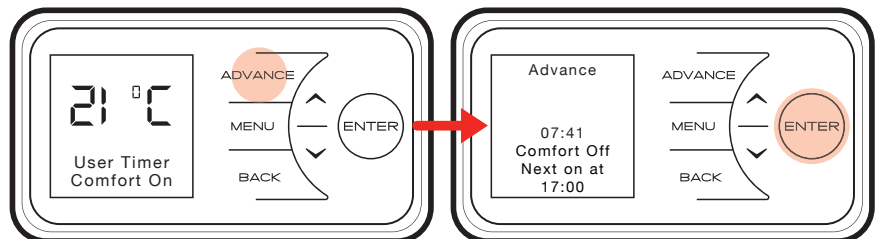
The heater leaves the factory set in **User Timer** mode. This mode will give you four periods of heating split throughout the day.



Advance

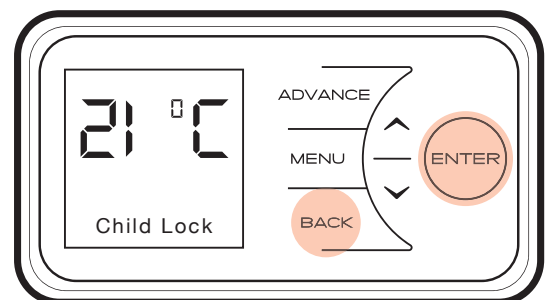
Sometimes you may need to change the way you use your heating temporarily. This is achieved by using the **Advance** function. The **Advance** function allows you to begin the next '**Comfort**' mode early.

If the heater is in '**Comfort Off**' mode and you want heat – press the **Advance** button. If the heater is in '**Comfort On**' mode and you don't want heat, press the **Advance** button. The heater's change mode will go off until the beginning of the next '**Comfort**' period, then go back to the timed heating periods.



Activating the Child Lock

In cases where unauthorised persons may tamper with the control settings it is possible to set a tamper-proof feature at the time of installation, by pressing and holding the **Back** button and the **Enter** simultaneously for three seconds, '**Child Lock**' will appear on the screen, repeat to reverse. See the Operating Instructions for further details.



Sunhouse

Customer Helpline: 0344 879 3588
aftersales@dimplex.co.uk
www.dimplex.co.uk

Glen Dimplex Heating and Ventilation
Millbrook House, Grange Drive, Hedge End, Southampton, SO30 2DF